



South East Regional Health Authority Infrastructural Development Pictorial 2024



Table of CONTENTS

1 MISSION/VISION /CORE VALUES

2 **ST. THOMAS
INFRASTRUCTURAL DEVELOPMENT**

3 *Port Morant Health Centre
Upgrade Project*



4 *Arcadia Health Centre
Upgrade Project*

5 *Rowlandsfield Health Centre
Fencing Project*

6 *Morant Bay Health Centre
Waterproofing Upgrade Project*

7 *Princess Margaret Hospital
Roof Repair at the Accident
and Emergency Department*

8 **KINGSTON AND ST. ANDREW
INFRASTRUCTURAL DEVELOPMENT**

9 *Supply, Delivery and Installation
of (6) X-Ray Machines at
Regional Hospitals*



10 *Temporary Housing for Cancer Patients
Reopens at St. Joseph's Hospital*

11 *National Chest Hospital
Upgrade Projects*



12 **ST. CATHERINE
INFRASTRUCTURAL DEVELOPMENT**

13 *Outpatient Waiting Area
Spanish Town Hospital*

14 *New Relocated Temporary Pharmacy
Spanish Town Hospital*

15 *New Relocated Temporary Laboratory
Spanish Town Hospital*

16 *New Staff Care Park and Stores Building
Spanish Town Hospital*

17 *New Day Care Facility
Spanish Town Hospital*



18 *Central Village Health Centre
Renovation Project*

19 *Linstead Hospital Accident and Emergency
Roof Repair and Associated Work*

20 **ACKNOWLEDGEMENT**

Mission Statement

The Mission of the South East Regional Health Authority is to promote and safeguard the health of the Jamaican people in collaboration with individuals, groups/agencies through the provision and monitoring of cost-effective, preventive, curative, promotive and rehabilitative services delivered by adequately trained and motivated personnel.



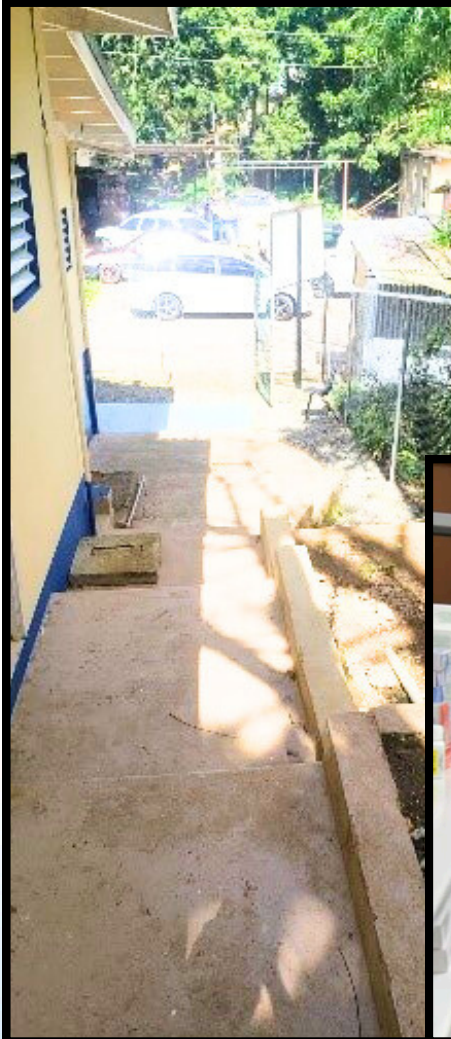
Vision Statement

The South East Regional Health Authority with the general population, seeks to facilitate a satisfying and healthy life.

Core Values

Accountability, Transparency, Integrity, Equity, Merit, Respect and Fairness .

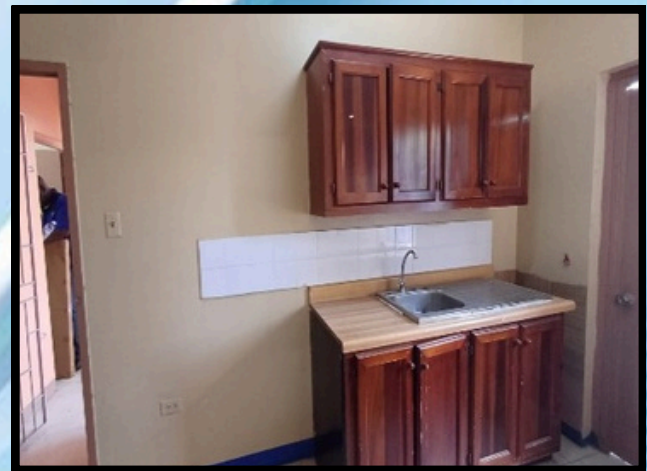
ST. THOMAS INFRASTRUCTURAL DEVELOPMENT PICTORIAL



PORT MORANT HEALTH CENTRE UPGRADE PROJECT

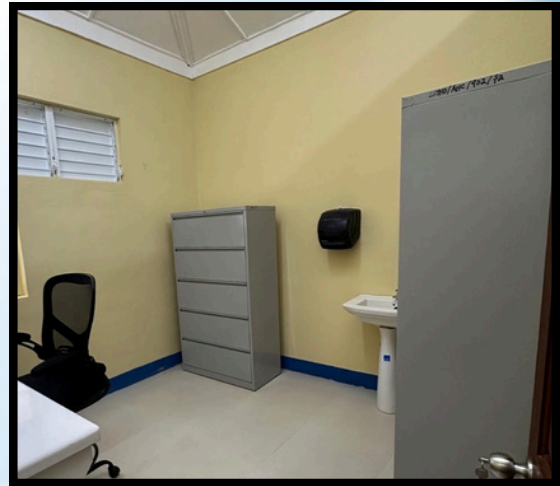


Dr. the Hon. Christopher Tufton, Minister of Health and Wellness, cuts the ribbon to officially reopen the Port Morant Health Centre on September 19, 2024 under 'Operation Refresh'. Captured also from left are: Mr. Lascelles Brown, Acting Regional Director, SERHA; Dr. Michelle Charles, Member of Parliament, St. Thomas Eastern; Mr. Wentworth Charles, Board Chairman, SERHA; and Mrs. Colleen Wright, Parish Manager, St. Thomas Health Services.



The Port Morant Health Centre, a Type II facility, received a major upgrade at a cost of JA\$28 million, from the National Health Fund under 'Operation Refresh', a programme of the Ministry of Health and Wellness. The scope of work carried out are retiling, repainting, replacement of fixtures and fittings and roof repairs. External work included the construction of a patient waiting area, landscaping and paving. This upgraded facility provides 34, 000 residents in the communities of Land Top, Pear Tree River, Leith Hall and Pamphret. The Centre is open Monday to Friday from 8:00 a.m. to 4:00 p.m. The services offered are child health clinic, medical clinic, nutrition counseling, environmental health services, pharmacy, postnatal, family planning, pap smear, and antenatal.

ARCADIA HEALTH CENTRE UPGRADE PROJECT



The Arcadia Health Centre, a Type I facility, has been upgraded under 'Operation Refresh' at a cost of JA\$6,100,000 million, by the National Health Fund. The renovation included repainting, retiling, and changing interior fixtures and fittings. Termite treatment, fence repairs, and debushing were also done to enhance care for 200 residents. The health centre operates Mondays to Fridays from 8:00 a.m. to 4:00 p.m. The services offered are child and maternal health services, PapSmear, Immunization, and Family Planning.

ROWLANDSFIELD HEALTH CENTRE FENCING PROJECT



The project at the Rowlandsfield Health Centre focused on the construction of perimeter fencing and landscaping of external space at a cost of JA\$2,000,000.00 million, funded by the National Health Fund. This health centre is a Type I facility that offers family health (antenatal, postnatal, Immunization, papsmear and family planning). The health facility opens every 2nd Wednesday, 2nd Friday, 3rd Tuesday, 4th Wednesday from 8:00 a.m. to 4:00 p.m.

MORANT BAY HEALTH CENTRE WATERPROOFING UPGRADE PROJECT



The Morant Bay Health Centre, a Type 4 facility, underwent a general renovation and upgrade. The renovation involved waterproofing of the existing concrete roof. This project was completed in February 2024 at a cost of JA\$4,128,450.00, funded by SERHA. The health centre is open Monday to Friday from 8:00 a.m. to 4:00 p.m. The services offered are family health (antenatal, Postnatal, immunization, papsmear, family planning, curative, dental, pharmacy, district public health inspectors, Mental Health, administration, laboratory (small), access to hospital Laboratory, X-Ray unit and HIV management.

PRINCESS MARGARET HOSPITAL'S ROOF REPAIR AT THE ACCIDENT AND EMERGENCY DEPARTMENT



The roof replacement for the Accident and Emergency Unit at Princess Margaret Hospital was successfully completed on November 18, 2023. The project which involved the installation of a new timber and metal roof was carried out at a cost of JA\$5,345,000.00, funded by SERHA. This significant upgrade enhances the facility's resilience against adverse environment impact. It also provides a more sense of security for both patients and staff.

KINGSTON AND ST. ANDREW INFRASTRUCTURAL DEVELOPMENT PICTORIAL



SUPPLY, DELIVERY AND INSTALLATION OF (6) X-RAY MACHINES AT HOSPITALS

The supply, delivery and installation of (6) X-Ray machines at Regional Hospitals: three (3) at the Kingston Public Hospital (KPH), one (1) at Spanish Town Hospital, one (1) at Bustamante Hospital for Children and one (1) at National Chest Hospital. These modern digital X-ray machines has improved the efficiency, speed of operation and quality of output, thereby generating and analysing resultant imagery. The total cost for the x-ray machines was JA\$500 million, funded by the Ministry of Health and Wellness.



Staff members in the X-ray Department testing one of the new X-ray machines.



During the commissioning of the digital X-ray machines at Kingston Public Hospital (KPH) on Wednesday, May 21, 2024, Dr. Gordon Palmer (right), Head of the Radiology Department and Consultant Radiologist, was explaining to Dr. the Hon. Christopher Tufton (left), Minister of Health and Wellness, about the real-time results that the new X-rays will produce. Also present in the photo are (from left) Ms. Carole-Ann Douse, Manager of Radiology Services, and other members of staff from the X-ray Unit at KPH.

TEMPORARY HOUSING FOR PATIENTS WITH CANCER REOPENS AT ST. JOSEPH'S HOSPITAL

The Pines 2, a temporary housing facility at the St. Joseph's Hospital, houses cancer patients traveling from remote areas for radiotherapy treatment, which can last from two to six weeks. This 20-bed facility is equipped with showers, toilets, and separate rooms for doctors and nurses. The team at St. Joseph's Hospital has ensured that Pines 2 meets the highest standards of comfort, safety, and modern healthcare. Meals are also provided for these patients. Constructed at a cost of JA\$15 million, funded by SERHA, the facility was officially reopened on Tuesday, June 11, 2024.



Image 1: Patients' beds inside the Pine 2



Image 2: Oxygen tanks and other equipment that will be used to treat patients with cancer



Image 3: Renovated bathroom for patients

NATIONAL CHEST HOSPITAL UPGRADE PROJECTS



The National Chest Hospital completed two major projects at a cost of over JA\$10 million. The first project involved the paving works to provide a stable platform for the movement of heavy vehicles, particularly for the delivery of medical oxygen. This was done at a cost of JA\$4,678,220.00 million, funded by SERHA. The second project involved the construction of a concrete structure to accommodate a new air compression and vacuum system to serve the hospital. This was done at a cost of JA\$5,428,616.00 million, funded by SERHA. See pictures of the projects above.

ST. CATHERINE INFRASTRUCTURAL RENOVATION PROJECTS

The Spanish Town Hospital (STH) has undergone repurposing areas of the facility to relocate services including pharmacy, laboratory, stores, staff parking, daycare and maintenance facilities at a cost of over \$A500 million, funded by the Inter-American Development Bank (IDB). These facilities were officially opened on Wednesday, May 15, 2024. The objective was to make real estate available for the construction of a new multistorey wing at STH. See pictorial on pages 13-17.



OUTPATIENT WAITING AREA SPANISH TOWN HOSPITAL



BEFORE



AFTER



The Outpatient Waiting Area at the Spanish Town Hospital (STH) was upgraded with comfortable chairs to improve patient experience at a cost of JA\$32 million, funded by SERHA to accommodate 300 patients who may require care but do not need to be admitted. This upgrade forms part of the transformation process in the healthcare sector. The outpatient waiting area was officially opened on Wednesday, May 15, 2024. The outpatient waiting area has been renamed *The Wentworth Charles Building*.

RELOCATED TEMPORARY PHARMACY SPANISH TOWN HOSPITAL

The National Health Fund facilitated the relocation of the pharmacy to a more suitable and spacious location. It is better equipped to dispense more drugs whilst providing a more comfortable waiting area and patient experience. Over 12,000 prescriptions are dispensed each month. Pictures of the pharmacy (inside and outside) are below:



NEW RELOCATED LABORATORY SPANISH TOWN HOSPITAL

The newly relocated laboratory is equipped with more space, tests, and modern equipment. Over 100,000 lab tests are done each month. This state-of-the-art facility will ensure efficiency and accuracy in diagnostics and treatment. Pictures of the laboratory (inside and outside) are below:



NEW STAFF CAR PARK AND STORES BUILDING SPANISH TOWN HOSPITAL

The new parking lot at Spanish Town Hospital (STH) will provide additional space for staff vehicles, ensuring a smoother and more efficient start to each workday. This initiative reflects SERHA's commitment to fostering an employee-centric work environment. The new store building at STH will improve inventory management and support the hospital's operation. This development is part of the ongoing efforts to enhance operational efficiency and improve patient care.



Image 1: Renovated Car Parking Lot



Image 2: Renovated Stores Building

NEW DAY CARE FACILITY SPANISH TOWN HOSPITAL

The renovated day care facility was built to accommodate the children of hospital staff, allowing parents to focus on their duties, knowing their children are being cared for in a secure and engaging setting. This initiative reflects the hospital's commitment to fostering a supportive work environment. See pictures below:



CENTRAL VILLAGE HEALTH CENTRE RENOVATION PROJECT

On January 18, 2024, the Central Village Health Centre in Catherine, a Type I facility, received an upgrade of JA\$8,694,000.00 million, funded by the National Health Fund to improve the aesthetics of the facility. The renovation included repainting, replacement of fixtures and fittings, wall construction and gate construction. This facility provides improved care for approximately 4000 residents and operates Mondays to Fridays from 8:00 a.m. to 4:00 p.m. It provides curative services, maternal and child healthcare, wound dressing, immunization and family planning. There is an attending doctor every Friday except for the 4th Friday of each month. See pictures below:



LINSTEAD HOSPITAL ACCIDENT AND EMERGENCY ROOF REPAIR AND ASSOCIATED WORK

The Linstead Hospital roof repair project and other associated work included the removal and replacement of the roof membrane along with screeding and the construction of a new water tank yard. Additionally, internal painting and repairs were carried out to address water-damaged areas. The work was completed on Thursday, October 31, 2024. The total cost for this project was JA\$24,822,000.00 million, funded by SERHA. See pictures below:



Acknowledgement

We begin by giving thanks to God for His unwavering guidance and provision of wisdom, which have been instrumental in the successful production of this booklet. We would like to express our heartfelt gratitude to the following individuals for their dedication and contributions:

- Mr. Lascelles Brown, Acting Regional Director, SERHA, for his support throughout this booklet.
- Ms. Shuwana Johnson, Public Relations Manager, SERHA and Head of the booklet Committee, for her vision, creativity, coordination, and unwavering efforts in supervising the production of this booklet.
- Mr. Raemone Collier, Public Relations Officer, SERHA, for assisting with the design of the booklet.
- Lieutenant Colonel (ret'd) Maurice Mathews JP, Senior Projects Manager, SERHA, for providing the project updates.

We also extend our thanks to the entire projects department, whose collective effort, dedication, and commitment made this booklet a reality. We are truly grateful for all your contributions.

Thank you



SPANISH TOWN HOSPITAL

NEW STATE OF THE ART
FACILITIES (2026)

Spanish
Town
Hospital

ACCIDENT AND EMERGENCY

EXPANDED HEALTHCARE SERVICES & FACILITIES



NEW SPECIALIZED SERVICES:

- Neurosurgery
- Haemato-oncology
- Cardiology
- Gastroenterology
- Otorhinolaryngology (ENT)
- Ophthalmology
- Psychiatry
- Expanded Urology



NEW INFRASTRUCTURE:

- 7 Operating Theatres
- Accident & Emergency (A&E) department
- Laboratory facilities
- Pharmacy
- Radiology department (including MRI and mammography)
- Intensive Care Unit (ICU)
- High Dependency Unit (HDU)



INCREASED CAPACITY:

- Additional Technical & Non-Technical Staff
- 133 hospital beds
- 12 outpatient clinic rooms
- Improved vehicular & pedestrian access
- Increased security coverage
- Upgraded support services



SERHA
South East Regional Health Authority
"People Caring for People"



Contact us: Corporate Office, 4th floor, VM Building
53 Knutsford Boulevard, Kingston 5
&
Regional Office, The Towers, 2nd Floor,
25 Dominica Drive, Kingston 5

    **LIKE & SHARE**
@theserhajm


TikTok @theserhajm1



www.serha.gov.jm

A Production of the Public Relations Unit
and Projects Department 2024